

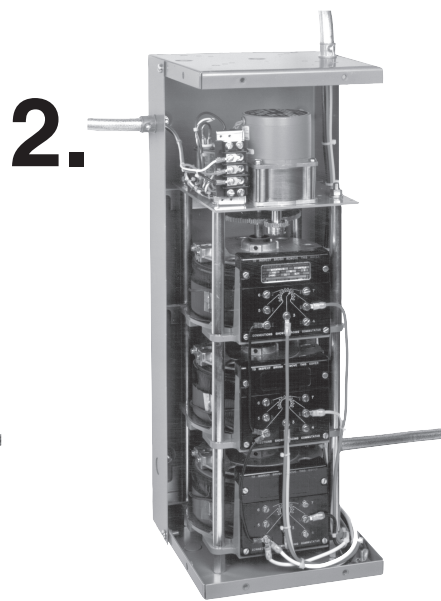
# Installation Instructions for PBA30 Series POWERSTAT® Variable Transformer Enclosures

## Bench or Wall Mounting

Installation is easy as 1-2-3 . . .



*Ready.*



*Set.*



*Go.*

## INSPECTION

Examine the Enclosure carefully for shipping damage or for missing parts. The "Damage and Shortage" instructions packed with the unit outline the procedures to follow if any parts are damaged or missing. In addition to the POWERSTAT Enclosure, a hardware pack which contains all hardware needed to mount the POWERSTAT Variable Transformer inside the Enclosure is supplied.

<u>Enclosure</u>	<u>Hardware Pack Number</u>
PBA30-N01-1	218654-001
PBA30-N01-2	218654-002
PBA30-N01-3	218654-003
PBA30-N01-4	218654-004

**Hardware Pack 218654-001** contains the following items:

<u>Quantity</u>	<u>Description</u>	<u>Part Number</u>
4	Screw, 1/4"-28 x 3/4" Long	203605-208-AB
4	Screw, 3/8"-24 x 1" Long	203505-310-AB
2	Nut, 1/4"-20	203600-110-AB
4	Nut, 1/4"-28	203600-111-AB
4	Nut, 3/8"-24	203600-115-AB
4	Washer, Flat, 1/4"	203601-112-AB
4	Washer, Flat, 3/8"	203601-114-AB
4	Lock Washer, 1/4"	203604-112-AC
4	Lock Washer, 3/8"	203604-114-AC
1	Lock Washer, Internal Tooth, #10	203603-110-AC
1	Lock Washer, #10	203604-110-AC
1	Washer, Flat, #10	203601-110-AB
1	Nut, #10-32	203600-108-AB

**Hardware Pack 218654-002** contains the following items:

<u>Quantity</u>	<u>Description</u>	<u>Part Number</u>
4	Screw, Hex Head, 1/4"-28 x 1/2" Long	203505-206-AB
4	Screw, 3/8"-24 X 3/4" Long	203505-308-AB
2	Screw, 3/8"-24 x 1" Long	203505-310-AB
6	Nut, 1/4"-20	203600-110-AB
4	Washer, Flat, 1/4"	203601-112-AB
4	Washer, Flat, 3/8"	203601-114-AB
4	Lock Washer, 1/4"	203604-112-AC
4	Lock Washer, 3/8"	203604-114-AC
1	Lock Washer, Internal Tooth, #10	203603-110-AC
1	Lock Washer, #10	203604-110-AC
1	Washer, Flat, #10	203601-110-AB
1	Nut, #10-32	203600-108-AB

**Hardware Pack 218654-003** contains the following items:

<u>Quantity</u>	<u>Description</u>	<u>Part Number</u>
8	Screw, Hex Head, 1/4"-28 x 1/2" Long	203505-206-AB
4	Screw, 3/8"-24 x 3/4" Long	203505-308-AB
2	Washer, Flat, 1/4"	203601-112-AB
6	Washer, Flat, 3/8"	203601-114-AB
6	Lock Washer, 1/4"	203604-112-AC
6	Lock Washer, 3/8"	203604-114-AC
1	Lock Washer, Internal Tooth, #10	203603-110-AC
1	Lock Washer, #10	203604-110-AC
1	Washer, Flat, #10	203601-110-AB
1	Nut, #10-32	203600-108-AB
2	Nut, 3/8"-24	203600-115-AB
2	Standoff, 1/4"-28 x 1-5/16" Long	051364-014-AB
2	Standoff, 1/4"-28 x 7/8" Long	051364-012-AB

## DESCRIPTION

PBA30 Series Enclosures are for motor-driven, single-, two- and three-gang POWERSTAT Variable Transformers of the M/ME116CU, M/ME116CU-40, M/ME117CU, M/ME216CU, M/ME217CU, DM116CU, DM117CU, DM216CU and DM217CU Series, and for both manual and motor driven, single-, two- and three-gang models of the 126U, 226U, 136BU and 236BU Series. Four Enclosures are available for use as indicated in the following charts.

PBA30 Series Enclosures are designed for use with open construction (suffix U) POWERSTAT Variable Transformers. They are constructed of heavy gauge sheet metal and are supplied completely assembled. The Enclosures have a full range of knockouts for wire entry and exit and are supplied with all necessary mounting hardware for mounting the POWERSTAT assembly in the Enclosure.

A PBA30 Enclosure is a NEMA Type 1 Enclosure as defined in NEMA Standard 250. It is designed to protect personnel from accidental contact with the enclosed POWERSTAT Variable Transformer.

Enclosures of the PBA30 Series are intended for use indoors in areas where unusual service conditions do not exist. They are designed for wall or bench mounting and provide the ventilation needed to allow operating the enclosed POWERSTAT Variable Transformer at its maximum rating.

**CAUTION:**

**These Enclosures have been designed and tested to provide the ventilation needed to permit operation of the POWERSTAT Variable Transformer at its full rating in ambient temperature to 40°C. When ambient temperature exceeds 40°C, the current rating of the POWERSTAT unit must be reduced as shown in the curve found in the instruction manual for your POWERSTAT model.**

### MANUALLY OPERATED MODELS

Series	Ganged Assemblies	POWERSTAT Variable Transformer Type	Enclosure Type
126 & 226	1	126U, 226U	PBA30-N01-1
	2	126U-2, 226U-2	PBA30-N01-2
	3	126U-3, 226U-3	PBA30-N01-3
136B, 236B & LW136B	1	136BU, 236BU, LW136BU	PBA30-N01-1
	2	136BU-2, 236BU-2, LW136BU-2	PBA30-N01-2
	3	136BU-3, 236BU-3, LW136BU-3	PBA30-N01-3

### MOTOR-DRIVEN MODELS

Series	Ganged Assemblies	POWERSTAT Variable Transformer Type	Enclosure Type
116C & 117C	1	M/ME116CU, M/ME116CU-40, M/ME117CU DM116CU, DM117CU	PBA30-N01-2
	2	M/ME116CU-2, M/ME116CU-40-2, M/ME117CU-2 DM116CU-2, DM117CU-2	PBA30-N01-3
	3	M/ME116CU-3, M/ME116CU-40-3, M/ME117CU-3 DM116CU-3, DM117CU-3	PBA30-N01-4
216C & 217C	1	M/ME216CU, M/ME217CU DM216CU, DM217CU	PBA30-N01-2
	2	M/ME216CU-2, M/ME217CU-2 DM216CU-2, DM217CU-2	PBA30-N01-3
	3	M/ME216CU-3, M/ME217CU-3 DM216CU-3, DM217CU-3	PBA30-N01-4
126 & 226	1	MC/ME126U, MC/ME226U DM126U, DM226U	PBA30-N01-2
	2	MC/ME126U-2, MC/ME226U-2 DM126U-2, DM226U-2	PBA30-N01-3
	3	MC/ME126U-3, MC/ME226U-3 DM126U-3, DM226U-3	PBA30-N01-4
136B 236B & LW136B	1	MD/ME136BU, MDLW/MELW136BU, MD/ME236BU DM136BU, DM236BU	PBA30-N01-2
	2	MD/ME136BU-2, MDLW/MELW136BU-2, MD/ME236BU-2 DM136BU-2, DM236BU-2	PBA30-N01-3
	3	MD/ME136BU-3, MDLW/MELW136BU-3, MD/ME236BU-3 DM136BU-3, DM236BU-3	PBA30-N01-4

## MOUNTING

The Enclosures have mounting pads on the rear for mounting against a flat surface. Follow these steps to mount the Enclosure.

### **Bench Or Wall Mounting, Manually Operated Single-Two- and Three-Gang Models**

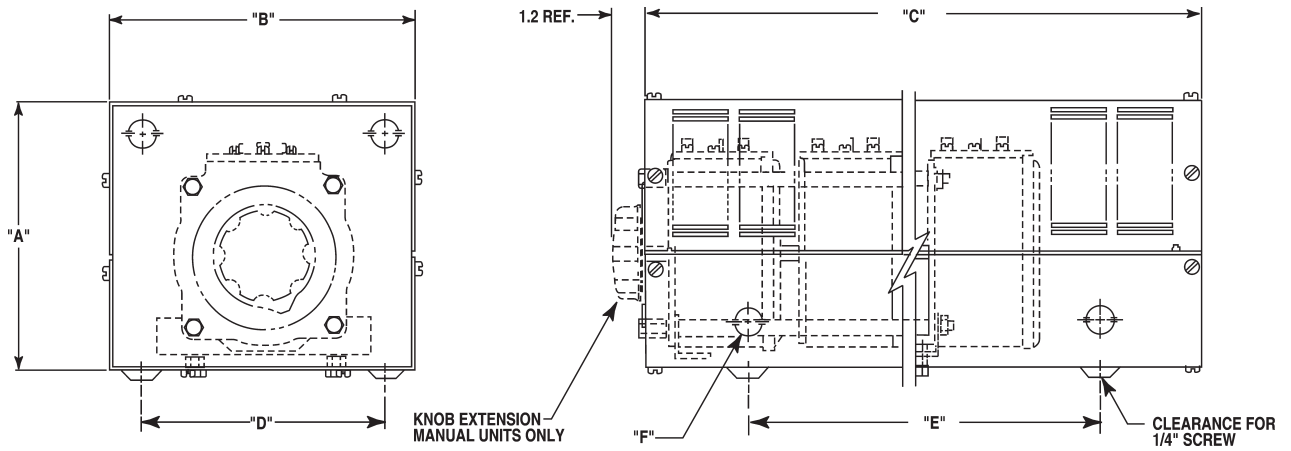
1. Remove the four screws that hold the front cover in place and remove the cover.
2. Hold the Enclosure in position and mark the locations of the mounting holes located in the drawn pads.
3. The holes in the Enclosure mounting pads provide clearance for 1/4" diameter bolts. Depending on the mounting method to be used, either drill through holes for 1/4" diameter mounting bolts or drill and tap for 1/4" diameter mounting screws.
4. The end covers allow the POWERSTAT unit to be mounted on either end of the Enclosure with the same option for shaft exit. Punch out the appropriate set of mounting holes and the shaft clearance hole in the proper end cover.
5. Remove the knob and the dial from the POWERSTAT assembly. Fasten the dial to the appropriate end cover using the same screws. Be sure that the dial markings will be oriented correctly with respect to the POWERSTAT brush setting after the variable transformer is mounted in the Enclosure.
6. Loosen the setscrews which hold the variable transformer shaft in place and adjust the shaft so it extends approximately 7/8" beyond the outer surface of the cover for 126U and 226U Series units, and 1-1/8" beyond the outer surface of the cover for 136BU and 236BU Series Models. Tighten the setscrews. Be sure that all of the brushes are in alignment on multi-deck units.
7. Bolt the POWERSTAT Variable Transformer to the end cover using the hardware supplied. On three-gang models, be sure that the holes in the POWERSTAT side bracket farthest from the mounting surface are aligned with the holes in the Enclosure. Bolt the unit to this bracket as well. For three-gang 126U and 226U models, use the 7/8" long hex standoffs supplied to provide support for the rear of the variable transformer. Bolt each standoff to both the POWERSTAT bracket and the Enclosure rear panel using two 1/2" long 1/4"-28 bolts per standoff.
8. Place the knob on the shaft and position its pointer correctly with respect to the final indications. Tighten the knob setscrews.
9. Fasten the Enclosure to the bench or wall using the holes previously prepared in steps 2 and 3. Hardware for fastening the Enclosure to the bench or wall is not provided.
10. Complete all wiring to the POWERSTAT variable transformer before replacing the front cover. A grounding stud is provided in the Enclosure and hardware for this stud is supplied. Several knockouts are provided in the Enclosure for wire entry and exit.

## MOUNTING (continued)

### Bench or Wall Mounting, Motorized Single-, Two- and Three-Gang Models

1. Remove the four screws that hold the front cover in place and remove the cover.
2. Hold the base of the Enclosure in position and mark the locations of the mounting holes provided in the drawn pads of the base.
3. The holes in the Enclosure mounting pads provide clearance for 1/4" diameter bolts. Depending on the mounting method to be used, either drill through holes in the mounting surface to provide clearance for 1/4" diameter bolts or drill and tap for 1/4" mounting screws.
4. Punch out the appropriate mounting holes in the end cover of the Enclosure.
5. Bolt the POWERSTAT Variable Transformer to the end cover with the hardware supplied. On two- and three-gang units, make sure the holes in the POWERSTAT side mounted bracket farthest from the mounting surface line up with the holes in the Enclosure. Bolt the unit to this bracket as well. On M/ME116CU, M/ME116CU-40, M/ME117CU, M/ME216CU and M/ME217CU models, use the 7/8" (22mm) long hex standoffs. Bolt each standoff to both the POWERSTAT bracket and the Enclosure rear panel using two 1/2" long 1/4"-28 bolts per standoff.
6. Mount the Enclosure to the wall or bench using the set of holes selected in step 2. Hardware for mounting the Enclosure is not supplied.
7. Complete all wiring to the POWERSTAT Variable Transformer before replacing the front cover. A grounding stud is provided inside the Enclosure and hardware for this stud is supplied. Several knockouts are provided in the Enclosure for wire entry and exit.

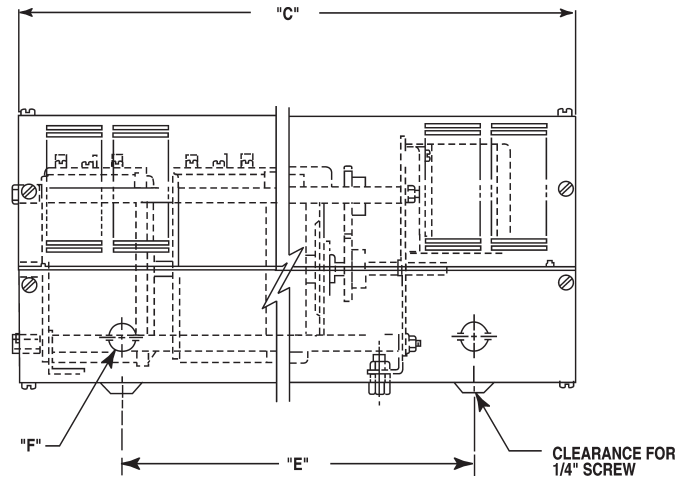
# Dimensions



## Manually Operated

Connectric Knockouts "F"

Type	Quantity	Diameter: Inches (Millimeters)
PBA30-N01-1	8	.88 (22.3)
PBA30-N01-2	8	
PBA30-N01-3	8	
PBA30-N01-4	8	



## Motor Driven

Type	Dimensions				
	"A"	"B"	"C"	"D"	"E"
PBA30-N01-1	10.12 (257.05)	9.25 (234.95)	6.25 (158.75)	7.62 (193.55)	4.25 (107.95)
PBA30-N01-2	10.12 (257.05)	9.25 (234.95)	14.00 (355.60)	7.62 (193.55)	7.00 (177.80)
PBA30-N01-3	10.12 (257.05)	9.25 (234.95)	19.00 (482.60)	7.62 (193.55)	12.00 (304.80)
PBA30-N01-4	10.12 (257.05)	9.25 (234.95)	25.00 (635.00)	7.62 (193.55)	18.00 (457.20)

# Available Coast-to-Coast and Internationally

## Voltage Control Components

- VOLT-PAC®** Variable Transformers
- POWERSTAT®** Variable Transformers
- LUXTROL®** Lighting Controls
- 5-WAY®** Binding Posts
- SUPERCON®** Electrical Connectors

Voltage Control Components are available worldwide through an extensive Authorized Stocking Distributor network. These Distributors offer literature, technical assistance and a wide range of models off-the-shelf for fastest possible delivery and service.

## Power Quality Products

- STABILINE®** Automatic Voltage Regulators
- STABILINE®** Transient Voltage Surge Suppressors
- STABILINE®** Uninterruptible Power Supplies
- STABILINE®** Power Conditioners

STABILINE Power Quality Solutions are available worldwide through an extensive Authorized Distributor and Reseller network which offer literature, technical assistance and a select range of models off-the-shelf for fastest possible delivery and service.

In addition, Superior Electric Manufacturer's Representatives are available to provide prompt attention to customer needs. Call or fax for ordering and application information or for the address of the closest Manufacturer's Representative, Authorized Distributor or Reseller.



The right to make engineering refinements on all products is reserved. Dimensions and other details are subject to change.

### Telephone and Fax Numbers

Telephone 860-507-2025  
Fax 860-507-2050  
Customer Service 860-507-2025, Ext. 70782  
Product Application 860-507-2025, Ext. 72058

### Toll-Free (in USA and Canada only)

Telephone 1-800-787-3532  
Fax 1-800-821-1369  
Customer Service 1-800-787-3532, Ext. 70782  
Product Application 1-800-787-3532, Ext. 72058

**28 Spring Lane • Suite 3 • Farmington, CT 06032 USA**  
**[www.superiorelectric.com](http://www.superiorelectric.com)**