

**INSTRUCTIONS
for
POWERSTAT[®]
VARIABLE TRANSFORMER**

216C-1098

**350 VA
Three Phase
Line Corrector
480/277 Volt, 60 Hz Input
+/- 5 Volt Output**

Superior Electric reserves the right to make engineering changes on all its products. Such refinements may affect information given in the instructions. Therefore, USE ONLY THE INSTRUCTIONS THAT ARE PACKED WITH THE PRODUCT.

WARNING: High voltages are present inside this unit during operation. Do not operate this unit unless all covers are in place. Installation and servicing should only be done by qualified personnel.



This page is intentionally left blank.

Instructions

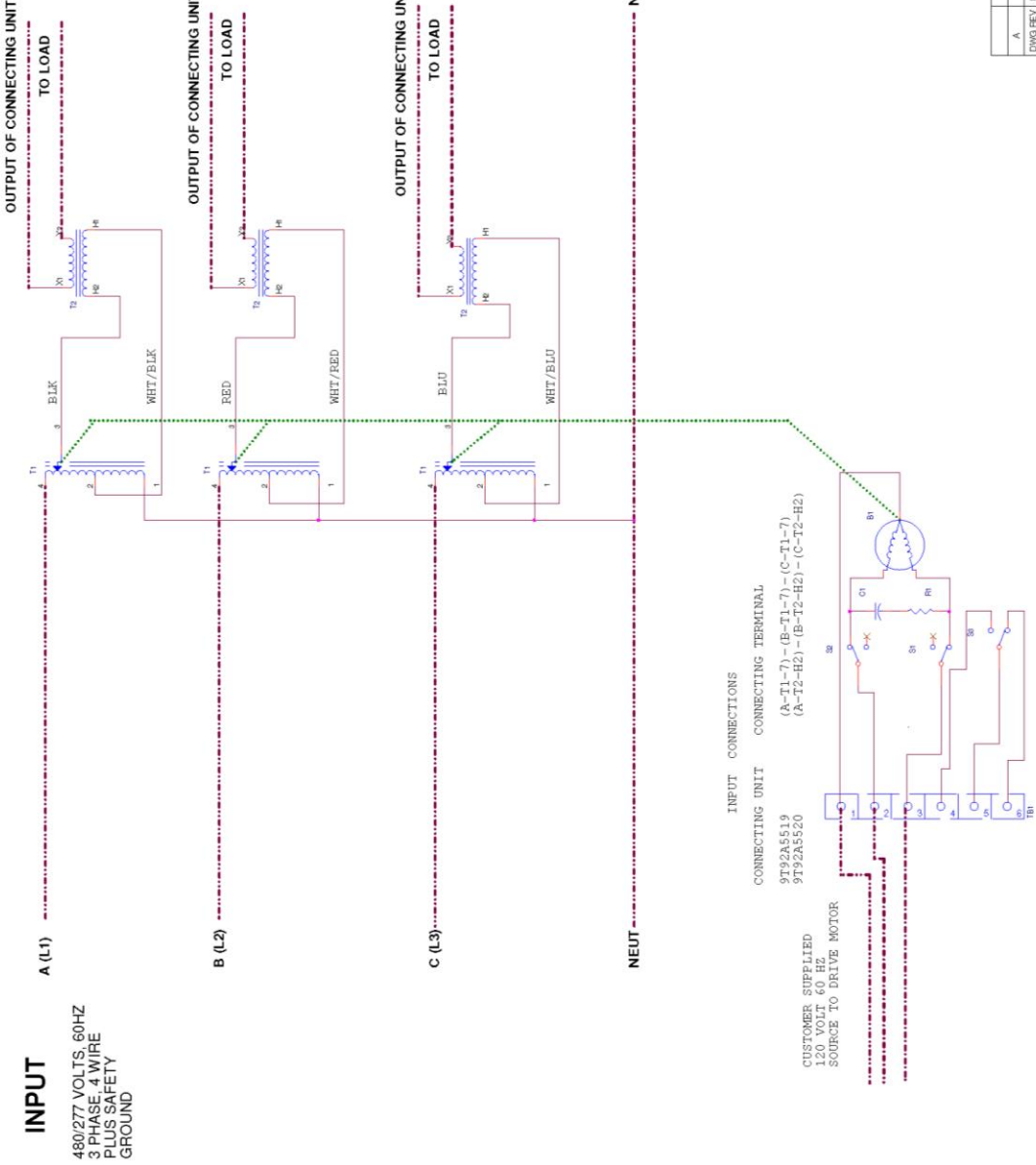
1. Follow all local, national, and regional codes while installing these components. Follow lockout/tagout policy to ensure safety. NEVER OPEN THE FRONT PANEL WHILE THE UNIT IS ENERGIZED.
2. Remove the front cover, top cover, and the right side enclosure skin on the unit. The front cover is removed with 4 quarter turn fasteners. The top cover is bolted in with 4 10-32 nuts in each top corner. There is also Velcro on the sides that will need to be pulled apart. The side enclosure skin is a rotating piece that pivots from the back. Remove the inside nut on the spacer stud and loosen the nut on the bottom plate that the front cover sat on. Then the side skin will rotate towards the back. It is also recommended to remove the back knockout panel for access.
3. On the 9T92A5520 units (If working on the 9T92A5519 skip this step) first start by replacing the 4 bolts on the inside flange with the parts in bag 5. This will allow the new bracket to fit correctly. Place a bolt with a shake on each side then place a nut on the bottom. Tighten until snug. Recommended torque is 45 in-lbs. See page 5 for a blown-out drawing of the 9T92A5520 units. See page 4 for a blown-out drawing of the 9T92A5519 units.
4. Place the bracket on the wall. (The box containing the bracket is labeled with a note showing that those must be used on the 9T92A5520, the larger unit) On the 9T92A5519 leave 6 inches from the top of the shelf to the top of the enclosure. Attach with 6 ¼-20 bolts washers and nuts in bags 3 and 4. The stackup is bolt, flat washer, wall, panel, flat washer, lock washer, nut. The nut must be on the inside or the enclosure skins will not go back on. Tighten to 45 in-lbs. Bolts attaching the center support to the wall may need to be moved down out of the way to place the panel on the wall. Output terminals on the wall will also need to be removed to place the panel on the wall. The new output points will be the transformer busbars.
5. Mount the 3 stack motorized POWERSTAT section to the new panel on the studs. The unit will hang off the studs. Use the ¼-20 nuts lock washers and flat washers in bag 7 to attach the unit. Torque is 45 in-lbs. The black terminal panels on the transformers should face towards the front of the enclosure.
6. Next place the fixed ratio transformers on the top of the panel. Use the 10-32 hardware in bag 2 to attach each transformer. Torque is 25 in-lbs. Placing the high voltage terminals nearer the wall will give more room for wiring the larger wire. Use a flat washer, lock washer, and a nut on each stud.
7. Using the hardware in bag 6 and terminals for number 8 hardware, wire the high voltage side of the fixed transformers to the motorized POWERSTAT. The POWERSTAT terminals are also number 8 screws. Use wire rated for at least 5 amps and 600 volts. Follow the schematic 231268-001 for wiring positions. Phases run top to bottom, left to right, back to front, A to C; when looking from the front of the unit. Tighten to 12 in-lbs.
8. Then taking the existing wire from the output of the Volt-Pac units run it to terminal X1. Use the hardware in bag 1 to attach the wires. Then lug the wires running to the load and attach those to terminal X2. Tighten bolts to 20 in-lbs.
9. Wire the motor control and any signal wiring necessary.
10. Check your work for any loose crimps or wires. Neaten and dress wires into a bundle. Reinstall the top cover, rear panel, side enclosure and front panel.

INPUT

480/277 VOLTS, 60HZ
3 PHASE 4 WIRE
PLUS SAFETY
GROUND

OUTPUT

+/- 5 VOLTS FROM
CONNECTED UNIT
70 AMPS MAX CONTINUOUS
PER PHASE



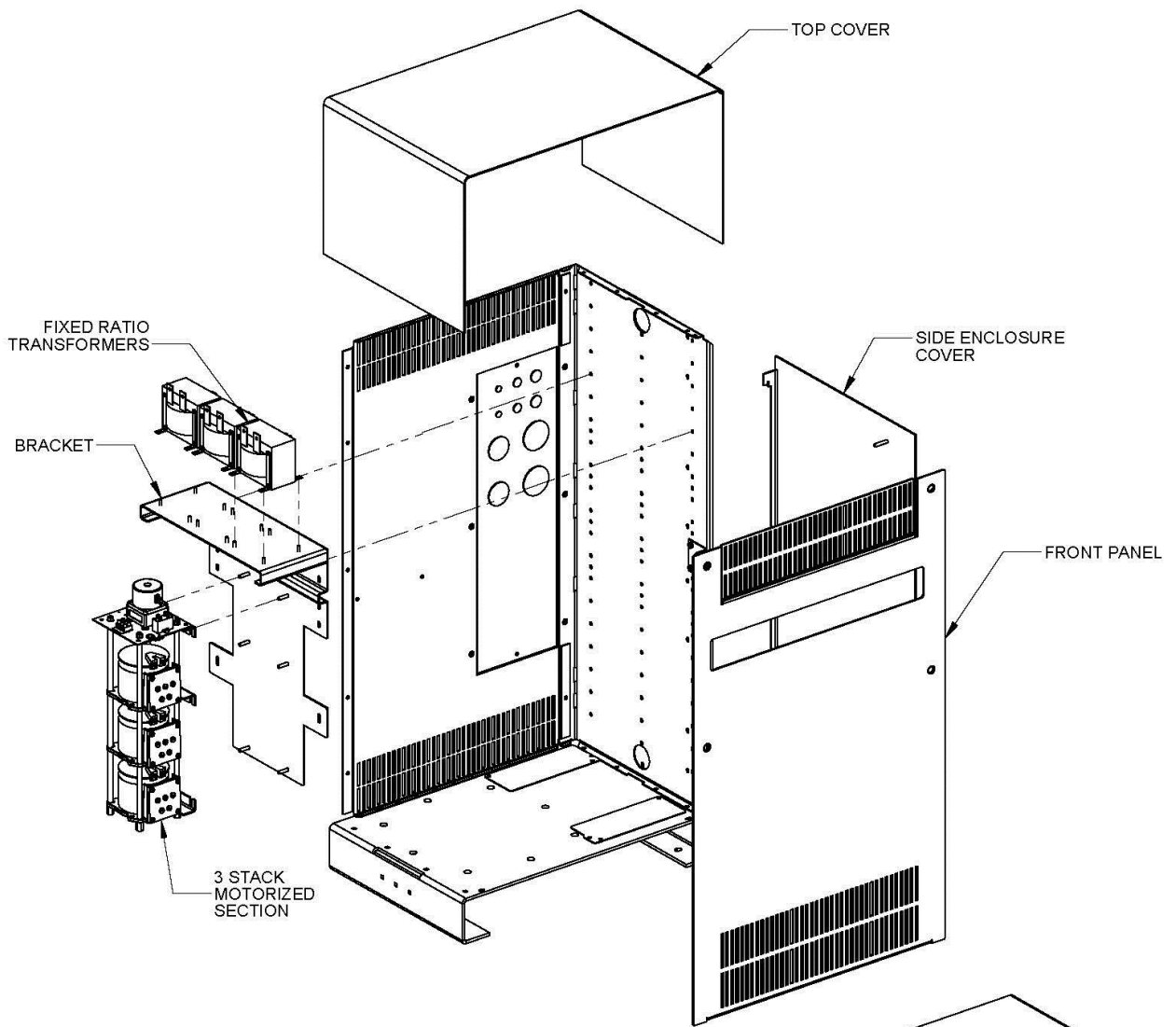
REFERENCE SYMBOL	PART DESCRIPTION
B1	MOTOR, AC
C1	CAPACITOR
R1	RESISTOR
S1, S2	SWITCH, LIMIT
F1	FUSE, 10 AMP, 6 TERM.
T1	VARIABLE TRANSFORMER
T2	350VA FIXED TRANSFORMER

- NOTES:
- (1) AC MOTOR RATED FOR 15 SECOND ROTATION
 - (2) CUSTOMER CONNECTIONS SHOWN WITH DASHED LINE
 - (3) AUX SWITCH IS ENGAGED WHEN BRUSH IS BETWEEN 1-2 OFF WHEN BRUSH IS BETWEEN 2-4
 - (4) NEUTRAL MUST BE THE SAME AS THE PRIMARY UNITS NEUTRAL.
 - (5) INPUT WIRING RATED FOR 5 AMPS MINIMUM

A	98855	DATE FOR RELEASE	KRM	3/22/18	JRP
ENG REV	EC NUMBER	PERSON DESCRIPTION	DATE	APPO	
TITLE					
SCHEMATIC,					
216C-1098					
DRAWN	KRM	DATE	3/22/18	SCALE	NONE
APPD	JRP	DATE	3/22/18	FORM NO.	58.674
				SHEET	1 OF 1

Superior Electric
One Cowles Road, Plainville, CT 06062

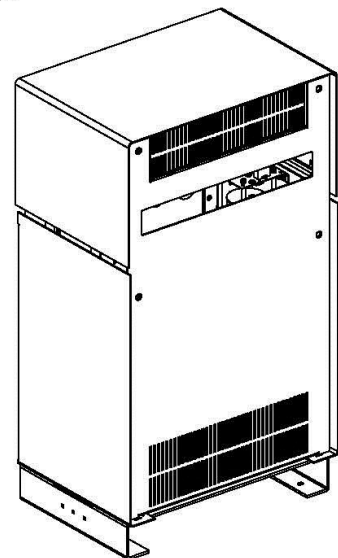
SIZE **B**
SCALE **231268-001**

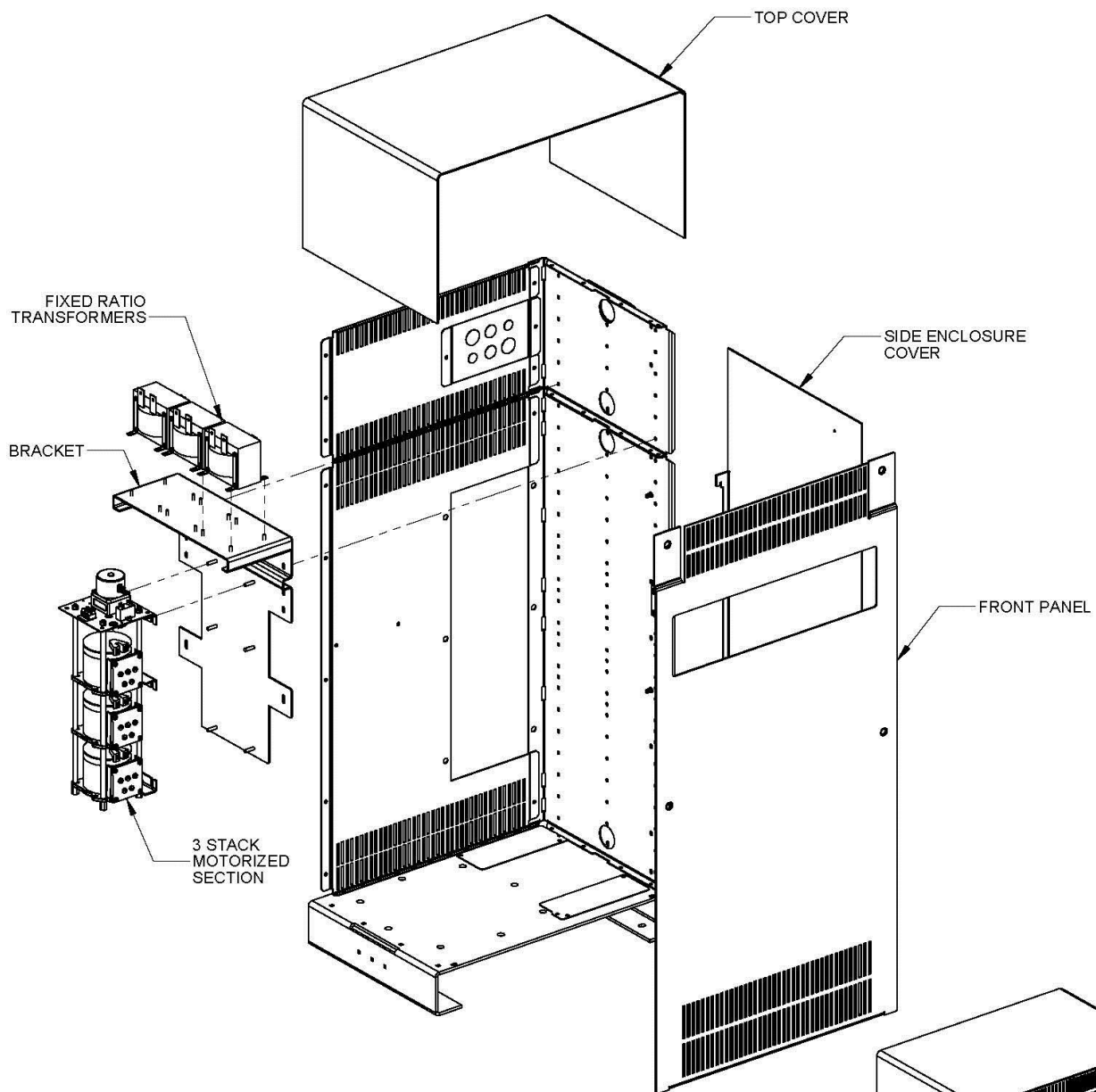


SHOWN WITH
D-ENCLOSURE

NOTES:

1. SIDE PANELS AND CURRENT 3 STACK MOTORIZED SECTION MAIN UNIT NOT SHOWN ON EXPLODED VIEW REMOVED FOR CLARITY.
2. SUPPLIED HARDWARE NOT SHOWN.

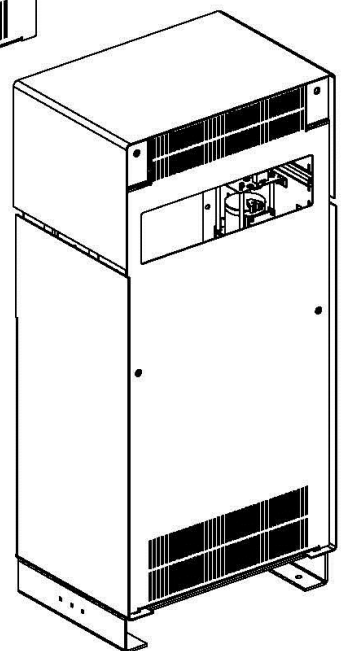




SHOWN WITH
E-ENCLOSURE

NOTES:

1. SIDE PANELS AND CURRENT 6 STACK MOTORIZED SECTION MAIN UNIT NOT SHOWN ON EXPLODED VIEW REMOVED FOR CLARITY.
2. SUPPLIED HARDWARE NOT SHOWN.



This page is intentionally left blank.

Available Coast-To-Coast and Internationally

Voltage Control Components

POWERSTAT®	Variable Transformers
VOLT-PAC®	Variable Transformers
LUXTROL®	Lighting Controls
5-WAY®	Binding Posts
SUPERCON®	Electrical Connectors

Voltage Control Components are available worldwide through an extensive Authorized Stocking Distributor network. These Distributors offer literature, technical assistance and a wide range of models off-the-shelf for fastest possible delivery and service.

Power Quality Solutions

STABILINE®	Automatic Voltage Regulators
STABILINE®	Transient Voltage Surge Suppressors
STABILINE®	Uninterruptible Power Supplies
STABILINE®	Power Conditioners

STABILINE Power Quality Solutions are available worldwide through an extensive Authorized Distributor and Reseller network, which offer literature, technical assistance and a select range of models off-the-shelf for fastest possible delivery and service.

In addition, Superior Electric Manufacturer's Representatives are available to provide prompt attention to customer needs. Call or fax for ordering and application information or for the address of the closest Manufacturer's Representative, Authorized Distributor or Reseller.



An ISO9000
Registered
Company

Telephone and Fax Numbers

Telephone	860-507-2025
Fax:	860-507-2050
Customer Service:	860-507-2025 Ext. 70782
Product Application	860-507-2025 Ext. 72058

Toll-Free (in U.S.A. and Canada only)

Telephone	1-800-787-3532
Fax:	1-800-821-1369
Customer Service:	1-800-787-3532 Ext. 70782
Product Application:	1-800-787-3532 Ext. 70058

One Cowles Road • Plainville, CT 06062
www.superiorelectric.com

The right to make engineering refinements on all products is reserved. Dimensions and other details are subject to change.

© 2018
213709-269_1_A.docx
Revised 4/12/2018 12:57 PM
EC 99886