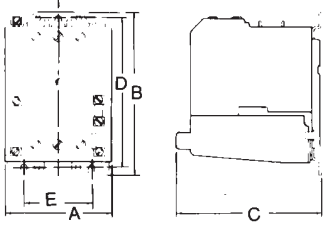


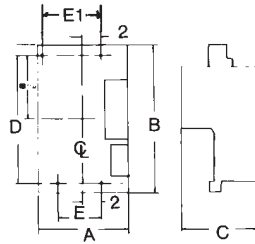
# TM - NEMA CONTROL Dimensions

## AC Magnetic Starters

### Open Type



### Size 5



### NEMA Open Type, Type 1, 4 & 12

Open Type		Dimensions - inches				
NEMA Size	Poles	Wide	High	Deep	Mounting	
		A	B	C	D	E
00	2-3	3 <sup>7</sup> / <sub>8</sub>	6	5 <sup>3</sup> / <sub>16</sub>	5 <sup>1</sup> / <sub>2</sub>	2 <sup>1</sup> / <sub>2</sub>
0-1	1-3	3 <sup>7</sup> / <sub>8</sub>	6	5 <sup>3</sup> / <sub>16</sub>	5 <sup>1</sup> / <sub>2</sub>	2 <sup>1</sup> / <sub>2</sub>
0-1	4	4 <sup>7</sup> / <sub>8</sub>	6	5 <sup>3</sup> / <sub>16</sub>	5 <sup>1</sup> / <sub>2</sub>	2 <sup>1</sup> / <sub>2</sub>
1P	2	3 <sup>7</sup> / <sub>8</sub>	6	5 <sup>3</sup> / <sub>16</sub>	5 <sup>1</sup> / <sub>2</sub>	2 <sup>1</sup> / <sub>2</sub>
2	2-3	3 <sup>7</sup> / <sub>8</sub>	6	5 <sup>3</sup> / <sub>16</sub>	5 <sup>1</sup> / <sub>2</sub>	2 <sup>1</sup> / <sub>2</sub>
2	4	4 <sup>7</sup> / <sub>16</sub>	6	5 <sup>3</sup> / <sub>16</sub>	5 <sup>1</sup> / <sub>2</sub>	2 <sup>1</sup> / <sub>2</sub>
3-4	3	5 <sup>15</sup> / <sub>16</sub>	11	7 <sup>1</sup> / <sub>16</sub>	9 <sup>3</sup> / <sub>4</sub>	3 <sup>1</sup> / <sub>2</sub>
3-4	4	6 <sup>7</sup> / <sub>8</sub>	11	7 <sup>1</sup> / <sub>16</sub>	9 <sup>3</sup> / <sub>4</sub>	3 <sup>1</sup> / <sub>2</sub>
5	3	10 <sup>1</sup> / <sub>8</sub>	15 <sup>7</sup> / <sub>8</sub>	9 <sup>5</sup> / <sub>8</sub>	13 <sup>1</sup> / <sub>2</sub>	6 <sup>3</sup> / <sub>8</sub>

**B**

### Notes:

1. One top mtg. keyhole on center line.