



ROTO-BIN-DICATOR®

MOTOR AND SWITCH REPLACEMENT INSTRUCTIONS

Tools required to replace equipment includes a 1/4" screwdriver and regular pliers.

OPERATING DESCRIPTION

The motor either turns the paddle in the absence of the bulk material or turns itself to actuate the micro switch when the paddle rotation is stopped by the presence of bulk material.

MOTOR REPLACEMENT

1. Remove the terminal block, barrier, and motor support bracket. Lift the motor out. If the pivot hole in the motor support bracket is elongated or shows signs of wear, the unit is being subjected to too much vibration. Shock mount the unit as outlined below.
2. Install the new motor (with Teflon® washer over the output shaft). Make sure the slotted output shaft engages the pin in the clutch head. The switch actuator arm must engage the slot in the motor bracket extension.
3. Reassemble the part removed in step 1 above using the new motor support bracket that was furnished.
4. Align the motor top square to the top of the switch bracket. Adjust the motor support bracket so the motor pivots freely to actuate the switch. Tighten the attaching hardware.

SWITCH REPLACEMENT

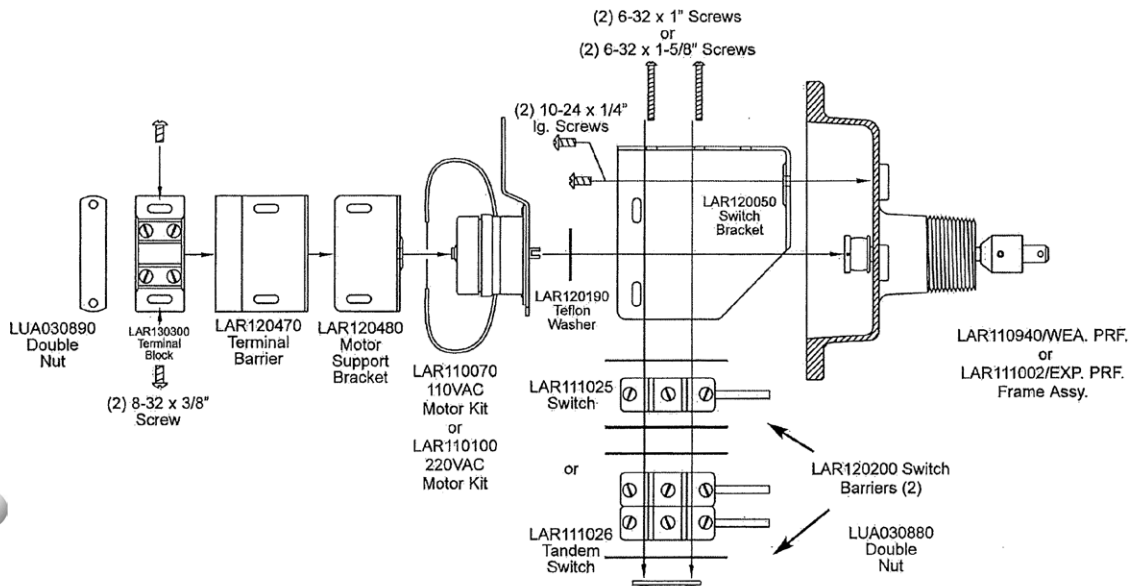
1. Remove the old switch and install the new one. Make sure that the switch actuator arm engages the slot in the motor bracket extension.
2. Adjust the switch so that acutation occurs at mid-point of motor bracket travel. Tighten the attaching hardware.

VIBRATION

If the unit shows signs of damage due to vibration, it is recommended that the unit be shock mounted with a 3/16" soft rubber gasket between the mounting plate and bin wall grommets and/or fabric washers underneath the attaching hardware.

WARNING!

When using explosion-proof units in hazardous locations, a seal fitting must be located within 18 in. (45.7cm) of the control. In order to preserve the explosion-proof integrity of the casting, care must be exercised when removing and replacing the cover so no damage occurs to the flanges.



150 Venture Boulevard
Spartanburg, SC 29306
(800) 778.9242 [Toll Free]
(864) 574.8060 [Phone]
(864) 574.8063 [Fax]
www.bindicator.com
sales@bindicator.com

© Venture Measurement
2014 All rights reserved
All data subject to change

LAR180050
Revision E